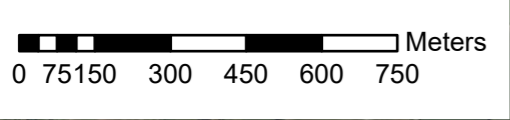


CIAL Site Boundary

CIAL Risk Score Category

- Category 1 (High)
- Category 2 (Med)
- Category 3 (Low)



This figure and the information used in its preparation will reviewed and updated no later than 31 July 2021.
 Aerial Images: CIAL, 2018

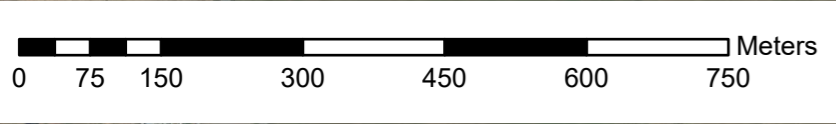
PROJECT No.		53920.1000	CLIENT	CHRISTCHURCH INTERNATIONAL AIRPORT LTD	
DESIGNED	ANDO	Jul.19	PROJECT	CHRISTCHURCH AIRPORT PSI UPDATE	
DRAWN	ANDO	Jul.19	TITLE	RISK CATEGORY ZONING - JULY 2019	
CHECKED	JJXC	Jul.19	SCALE (A3)	1:15,000	FIG No. Figure 5
APPROVED	DATE				REV 0



CIAL Site Boundary

CIAL Risk Score Category

- Category 1 (High)
- Category 2 (Med)
- Category 3 (Low)

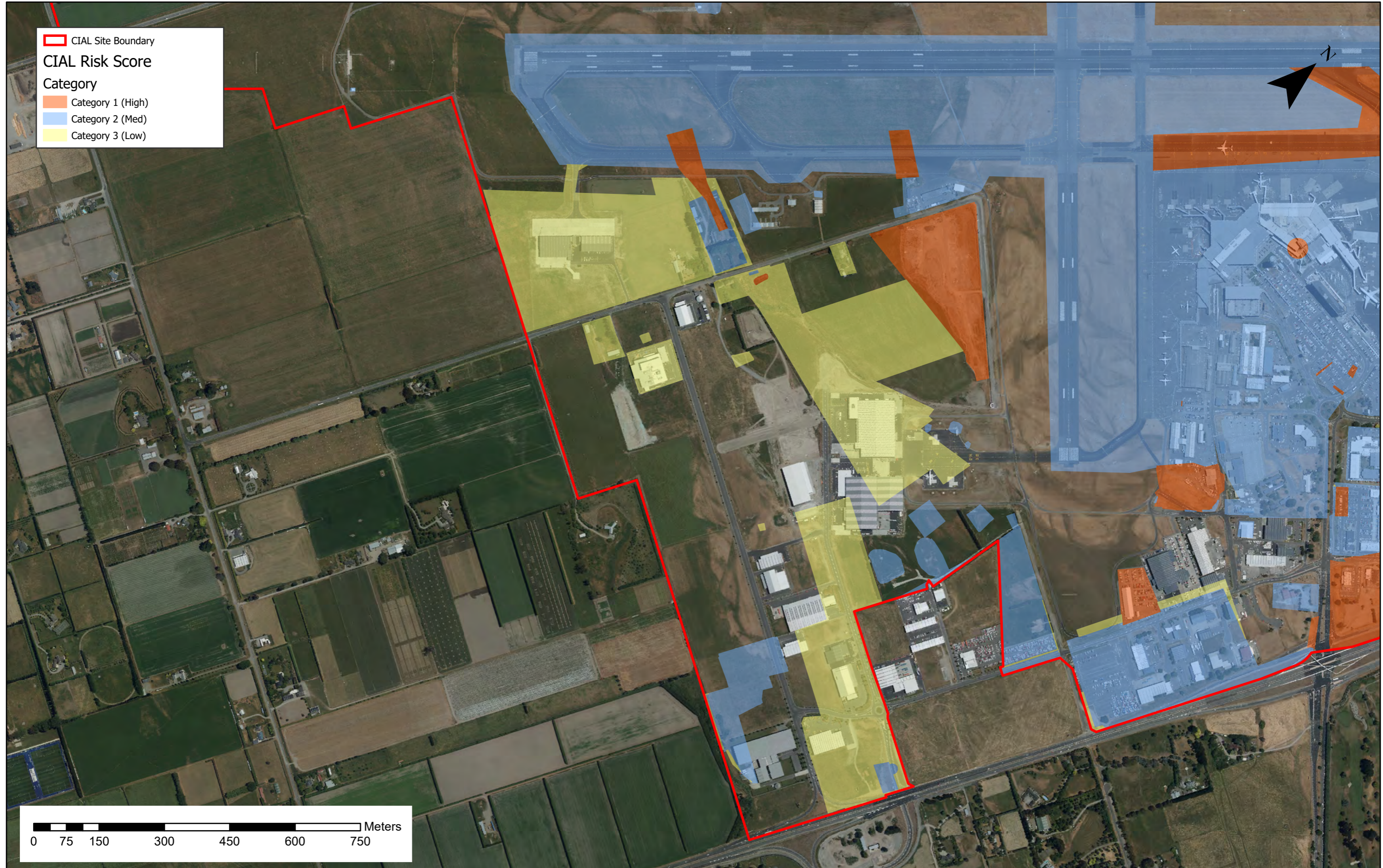


This figure and the information used in its preparation will reviewed and updated no later than 31 July 2021.
 Aerial Images: CIAL, 2018

PROJECT No. 53920.1000			CLIENT CHRISTCHURCH INTERNATIONAL AIRPORT LTD		
DESIGNED	ANDO	Jul.19	PROJECT CHRISTCHURCH AIRPORT PSI UPDATE		
DRAWN	ANDO	Jul.19			
CHECKED	JJXC	Jul.19			
TITLE RISK CATEGORY ZONING - JULY 2019			SCALE (A3) 1:8,000		
APPROVED			FIG No. Figure 5 a		REV 0



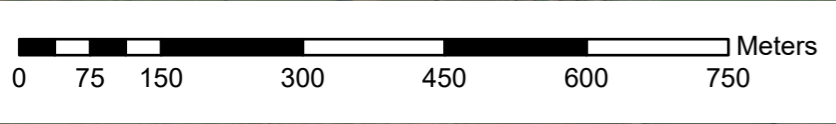
PROJECT No. 53920.1000		CLIENT CHRISTCHURCH INTERNATIONAL AIRPORT LTD
DESIGNED	ANDO Jul.19	PROJECT CHRISTCHURCH AIRPORT PSI UPDATE
DRAWN	ANDO Jul.19	TITLE RISK CATEGORY ZONING - JULY 2019
CHECKED	JJXC Jul.19	SCALE (A3) 1:8,000
APPROVED	DATE	FIG No. Figure 5 b
		REV 0



CIAL Site Boundary

CIAL Risk Score Category

- Category 1 (High)
- Category 2 (Med)
- Category 3 (Low)



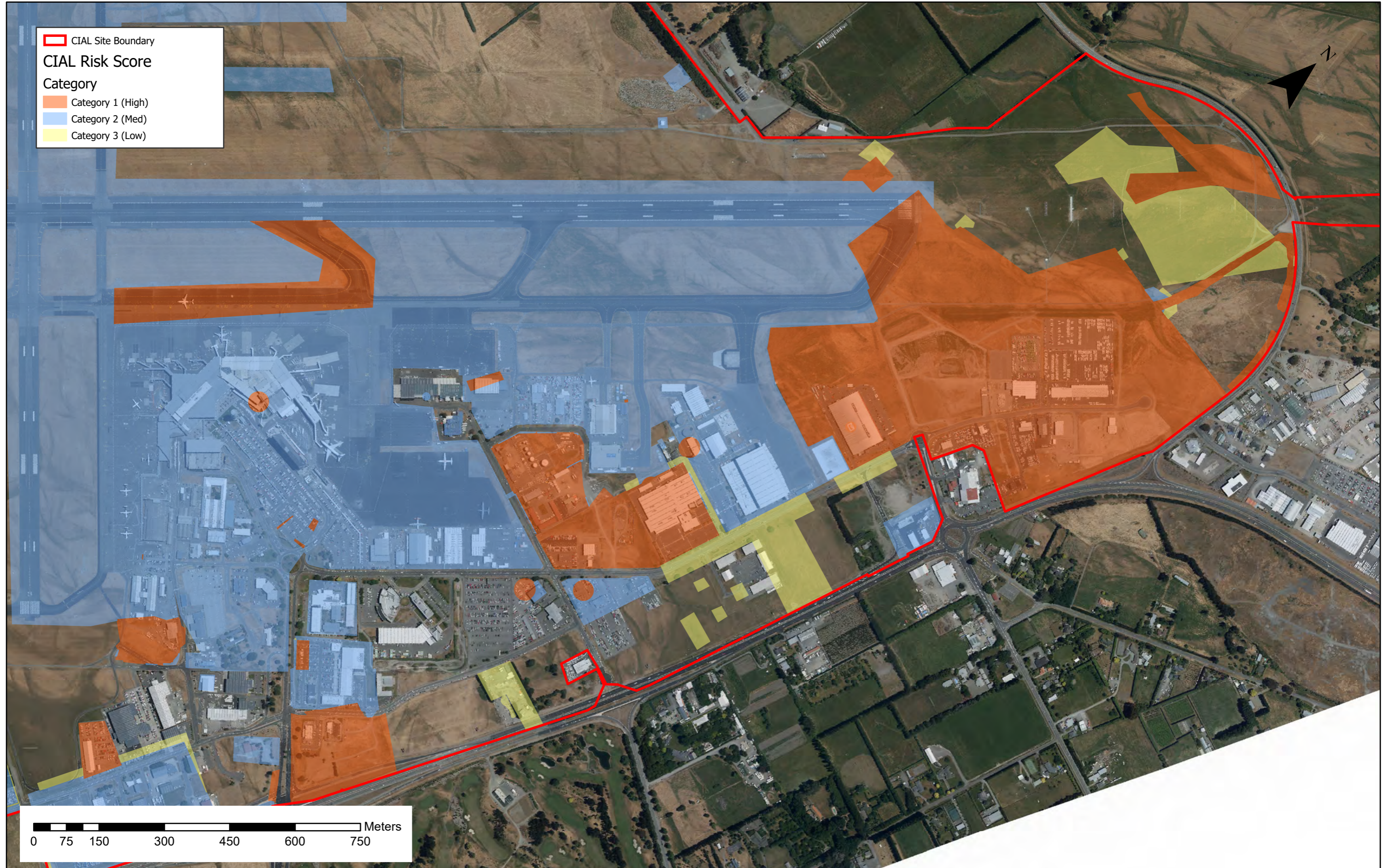
Tonkin+Taylor

Exceptional thinking together www.tonkintaylor.co.nz

This figure and the information used in its preparation will reviewed and updated no later than 31 July 2021.
 Aerial Images: CIAL, 2018

PROJECT No.	53920.1000	
DESIGNED	ANDO	Jul.19
DRAWN	ANDO	Jul.19
CHECKED	JJXC	Jul.19
APPROVED	DATE	

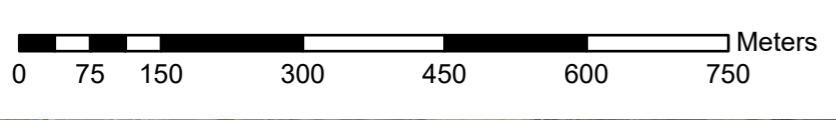
CLIENT	CHRISTCHURCH INTERNATIONAL AIRPORT LTD	
PROJECT	CHRISTCHURCH AIRPORT PSI UPDATE	
TITLE	RISK CATEGORY ZONING - JULY 2019	
SCALE (A3)	1:8,000	FIG No. Figure 5 c
REV	0	



CIAL Site Boundary

CIAL Risk Score Category

- Category 1 (High)
- Category 2 (Med)
- Category 3 (Low)



PROJECT No.		53920.1000		CLIENT	CHRISTCHURCH INTERNATIONAL AIRPORT LTD	
DESIGNED	ANDO	Jul.	19	PROJECT	CHRISTCHURCH AIRPORT PSI UPDATE	
DRAWN	ANDO	Jul.	19	TITLE	RISK CATEGORY ZONING - JULY 2019	
CHECKED	JJXC	Jul.	19	SCALE (A3)	1:8,000	FIG No. Figure 5 d
APPROVED		DATE				REV 0

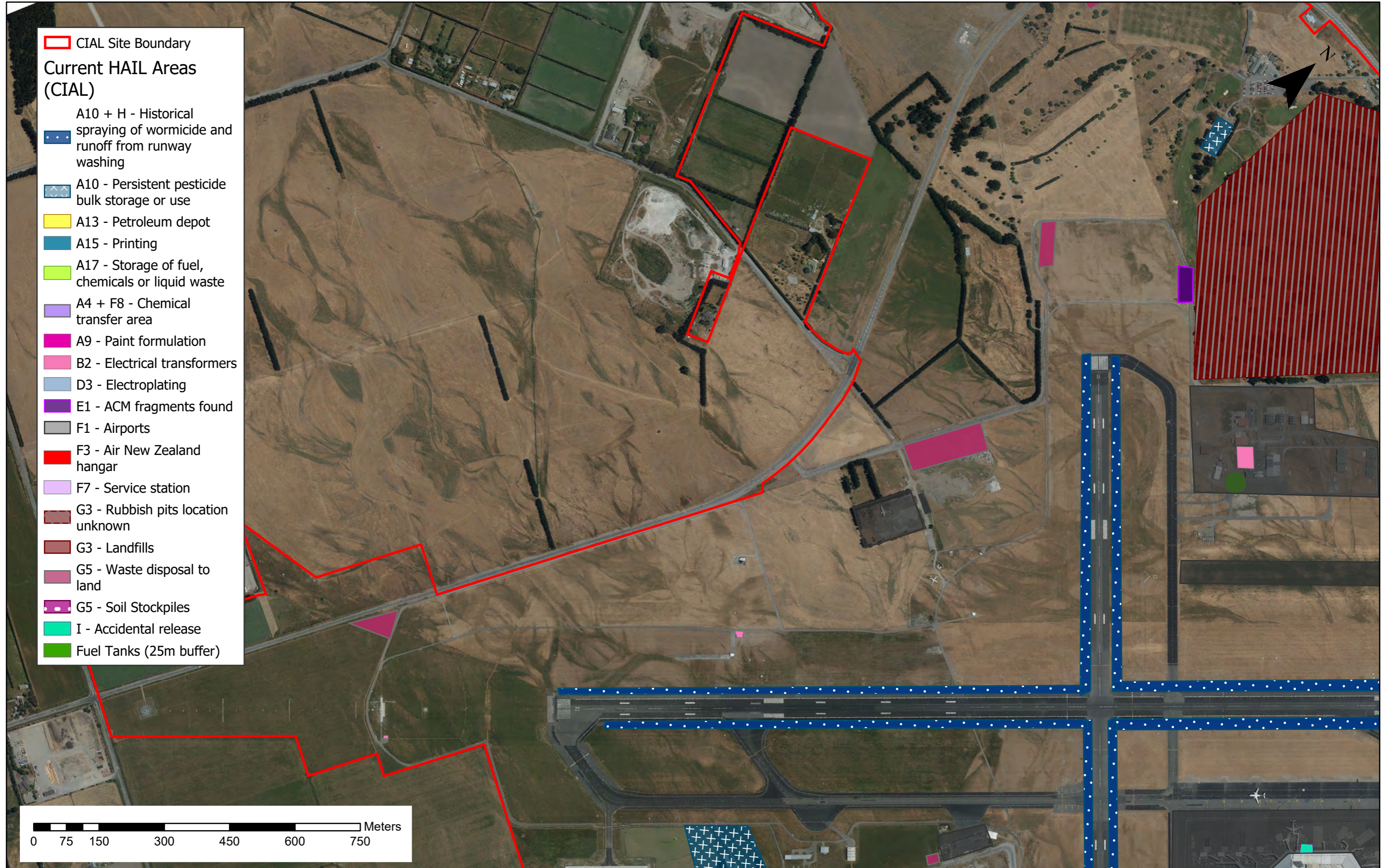


- CIAL Site Boundary
- Current HAIL Areas (CIAL)**
- A10 + H - Historical spraying of wormicide and runoff from runway washing
- A10 - Persistent pesticide bulk storage or use
- A13 - Petroleum depot
- A15 - Printing
- A17 - Storage of fuel, chemicals or liquid waste
- A4 + F8 - Chemical transfer area
- A9 - Paint formulation
- B2 - Electrical transformers
- D3 - Electroplating
- E1 - ACM fragments found
- F1 - Airports
- F3 - Air New Zealand hangar
- F7 - Service station
- G3 - Rubbish pits location unknown
- G3 - Landfills
- G5 - Waste disposal to land
- G5 - Soil Stockpiles
- I - Accidental release
- Fuel Tanks (25m buffer)

0 75 150 300 450 600 750 Meters

This figure and the information used in its preparation will reviewed and updated no later than 31 July 2021.
 Aerial Images: CIAL, 2018

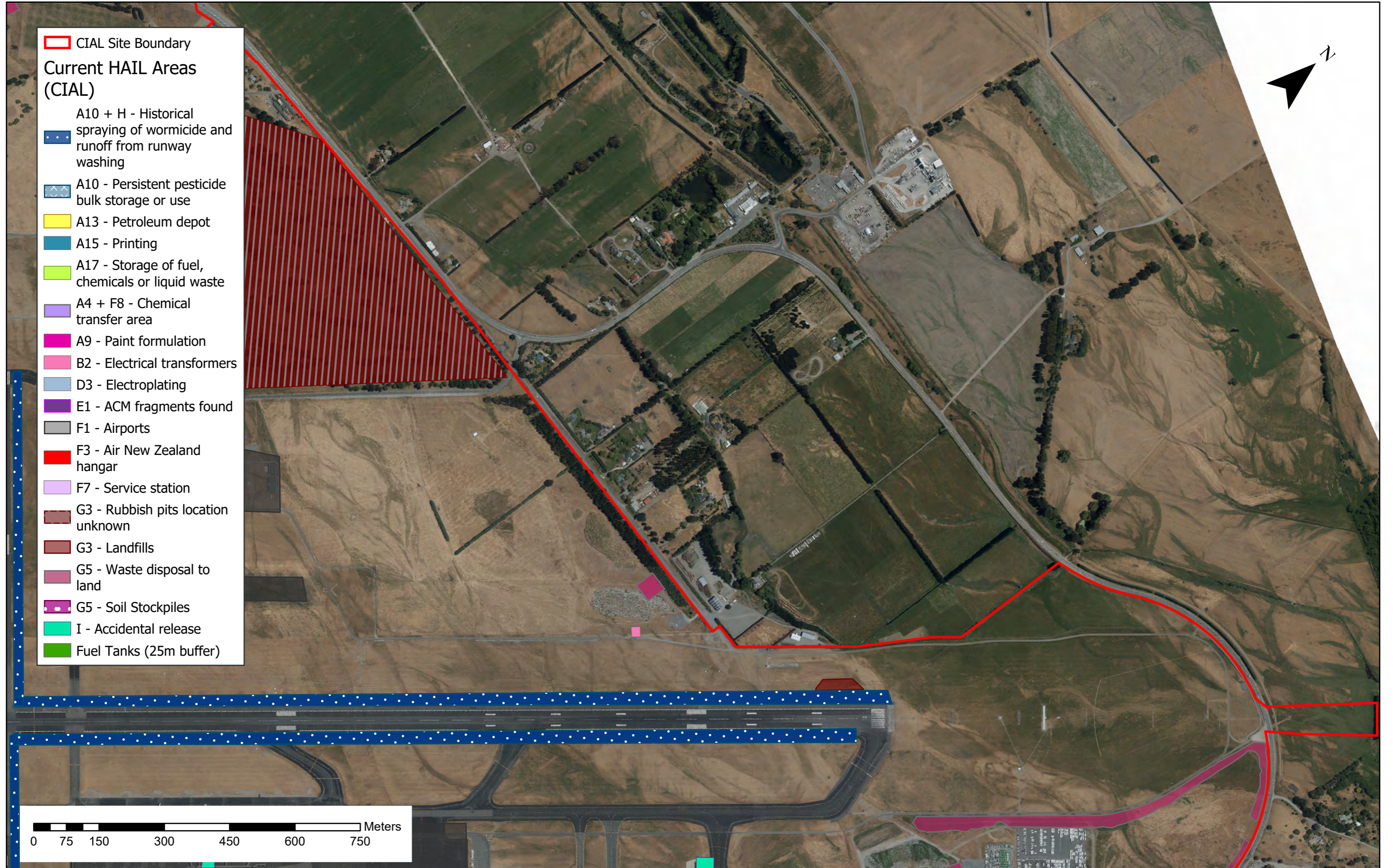
PROJECT No. 53920.1000		CLIENT CHRISTCHURCH INTERNATIONAL AIRPORT LTD
DESIGNED ANDO Jul.19	DRAWN ANDO Jul.19	PROJECT CHRISTCHURCH AIRPORT PSI UPDATE
CHECKED JJXC Jul.19		TITLE CURRENT HAIL AREAS - JULY 2019
APPROVED	DATE	SCALE (A3) 1:15,000
		FIG No. Figure 4
		REV 0

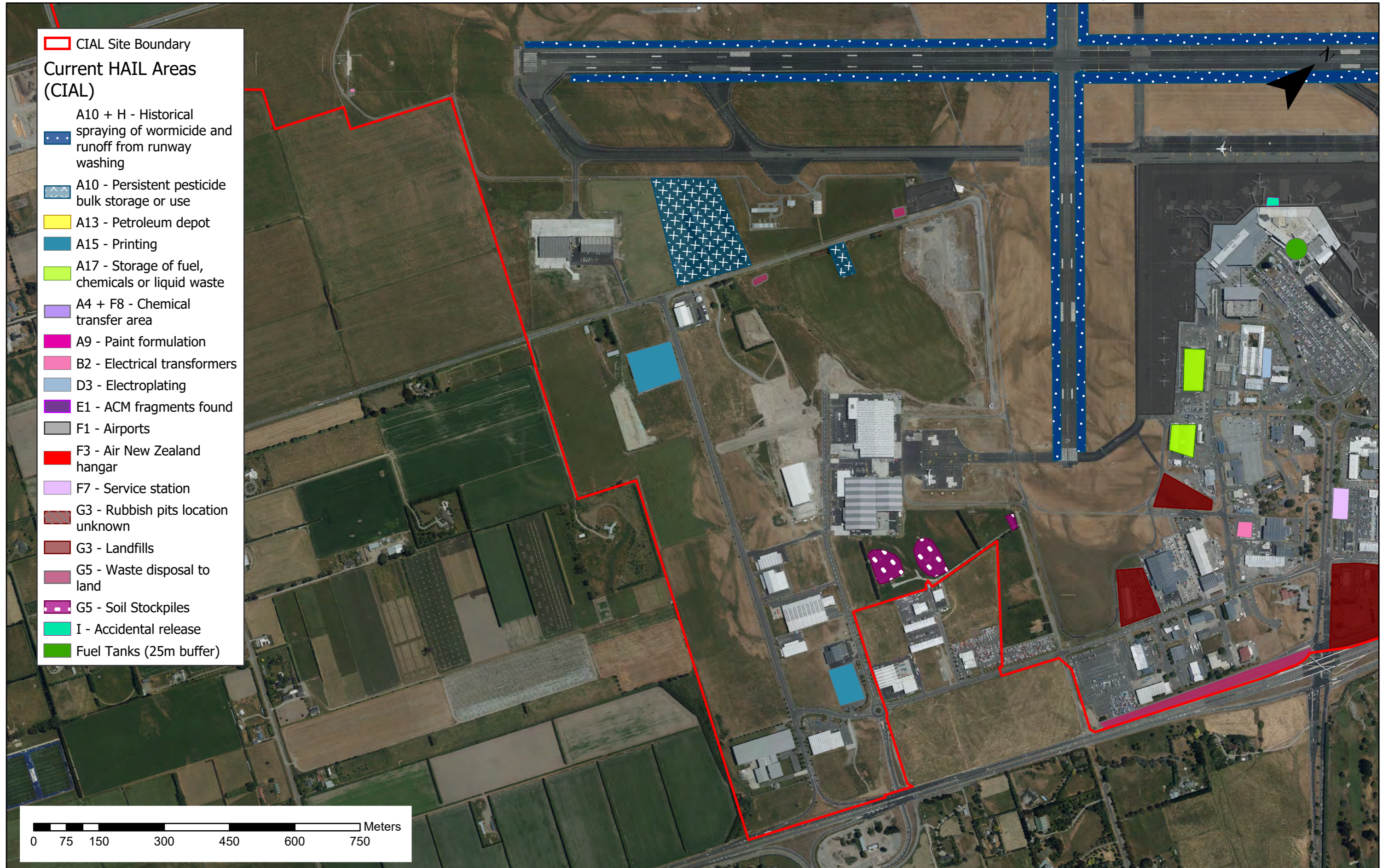


This figure and the information used in its preparation will reviewed and updated no later than 31 July 2021.
 Aerial Images: CIAL, 2018

PROJECT No.	53920.1000	
DESIGNED	ANDO	Jul.19
DRAWN	ANDO	Jul.19
CHECKED	JJXC	Jul.19
APPROVED	DATE	

CLIENT	CHRISTCHURCH INTERNATIONAL AIRPORT LTD	
PROJECT	CHRISTCHURCH AIRPORT PSI UPDATE	
TITLE	CURRENT HAIL AREAS - JULY 2019	
SCALE (A3)	1:8,000	FIG No. Figure 4 a
REV	0	



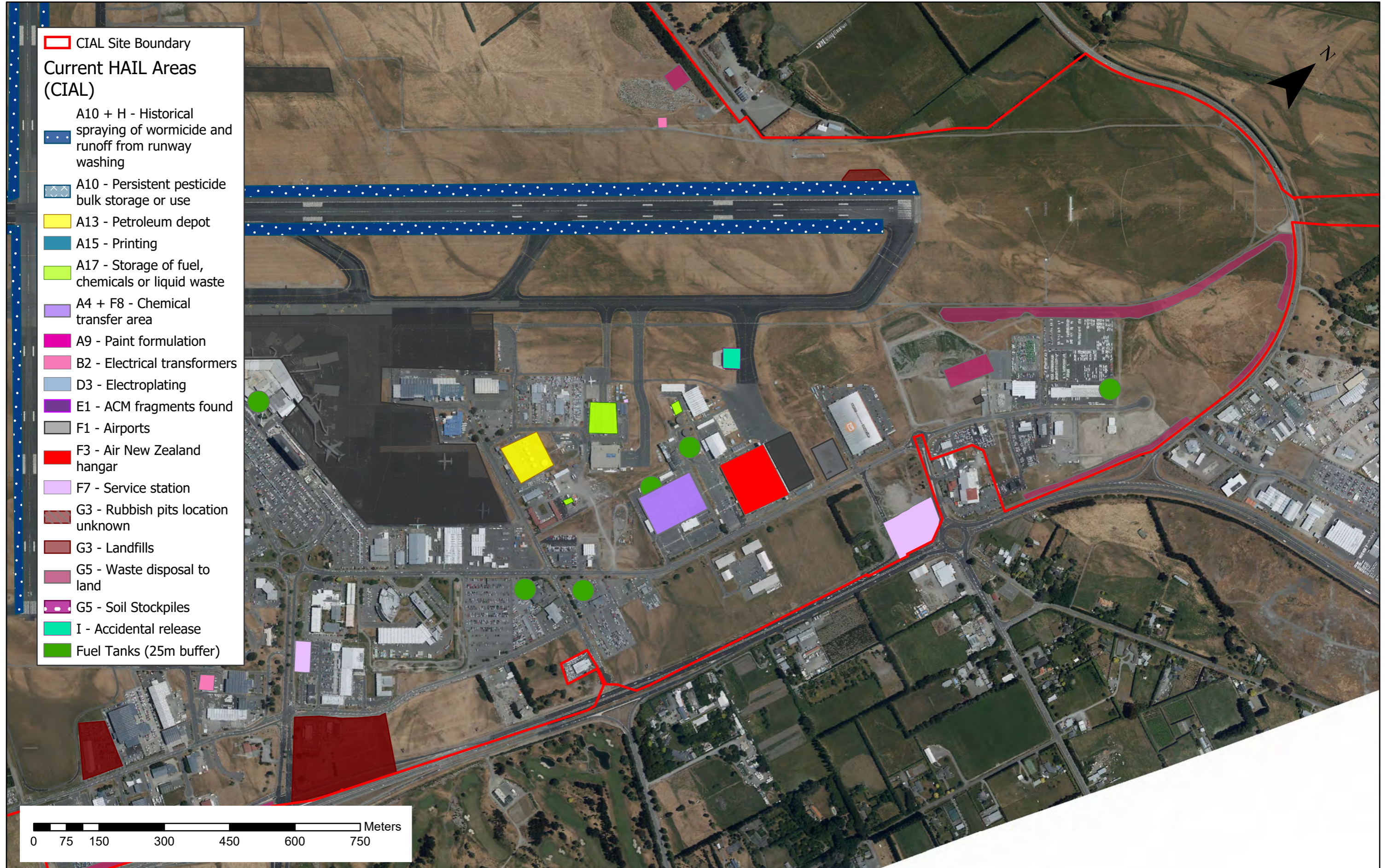


- CIAL Site Boundary
- Current HAIL Areas (CIAL)**
- A10 + H - Historical spraying of wormicide and runoff from runway washing
- A10 - Persistent pesticide bulk storage or use
- A13 - Petroleum depot
- A15 - Printing
- A17 - Storage of fuel, chemicals or liquid waste
- A4 + F8 - Chemical transfer area
- A9 - Paint formulation
- B2 - Electrical transformers
- D3 - Electroplating
- E1 - ACM fragments found
- F1 - Airports
- F3 - Air New Zealand hangar
- F7 - Service station
- G3 - Rubbish pits location unknown
- G3 - Landfills
- G5 - Waste disposal to land
- G5 - Soil Stockpiles
- I - Accidental release
- Fuel Tanks (25m buffer)

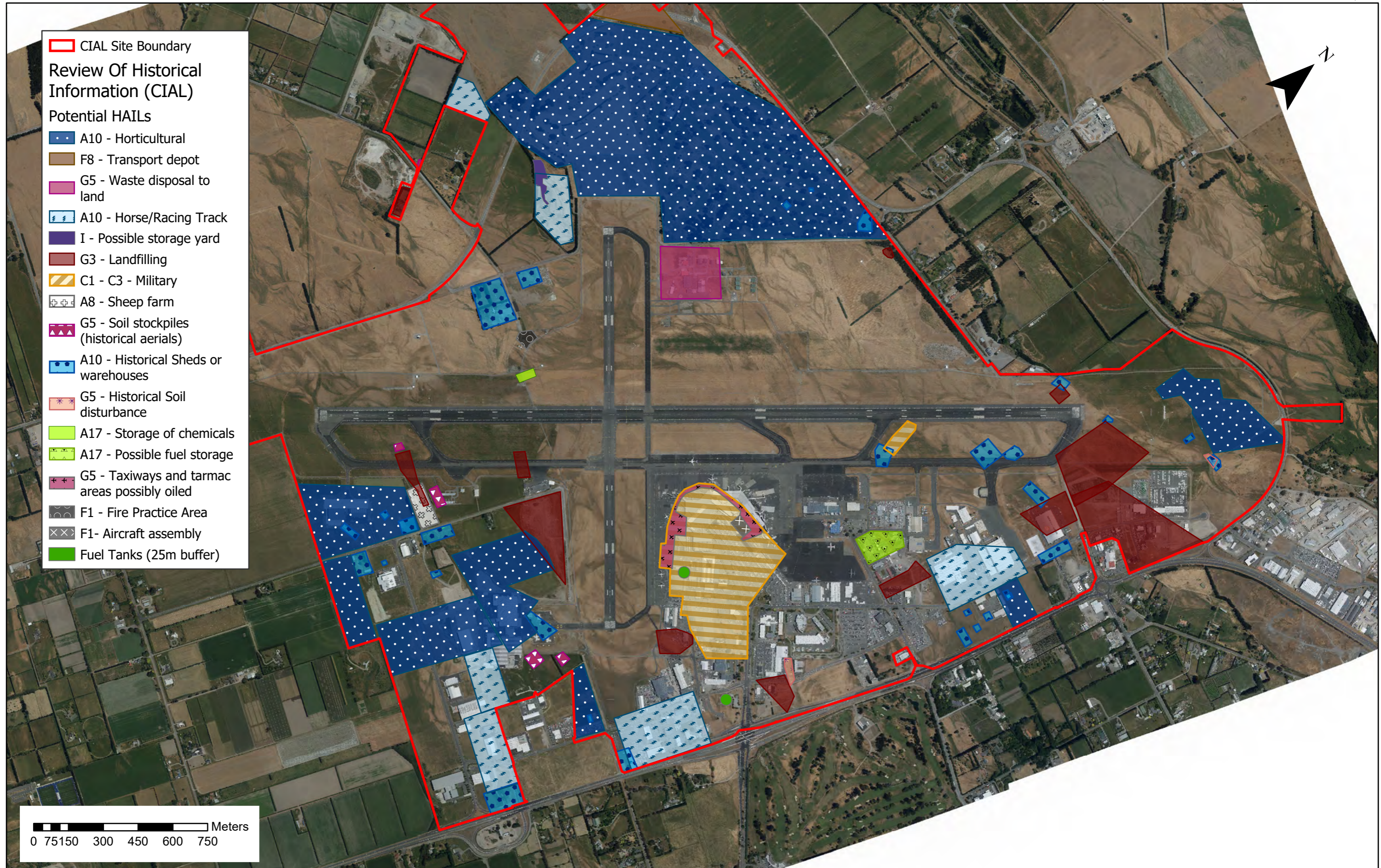


This figure and the information used in its preparation will reviewed and updated no later than 31 July 2021.
 Aerial Images: CIAL, 2018

PROJECT No. 53920.1000		CLIENT CHRISTCHURCH INTERNATIONAL AIRPORT LTD
DESIGNED ANDO Jul.19	DRAWN ANDO Jul.19	PROJECT CHRISTCHURCH AIRPORT PSI UPDATE
CHECKED JJXC Jul.19		TITLE CURRENT HAIL AREAS - JULY 2019
APPROVED	DATE	SCALE (A3) 1:8,000
		FIG No. Figure 4 c
		REV 0



PROJECT No.	53920.1000		CLIENT	CHRISTCHURCH INTERNATIONAL AIRPORT LTD	
DESIGNED	ANDO	Jul.19	PROJECT	CHRISTCHURCH AIRPORT PSI UPDATE	
DRAWN	ANDO	Jul.19	TITLE	CURRENT HAIL AREAS - JULY 2019	
CHECKED	JJXC	Jul.19	SCALE (A3)	1:8,000	FIG No. Figure 4 d
APPROVED	DATE				REV 0

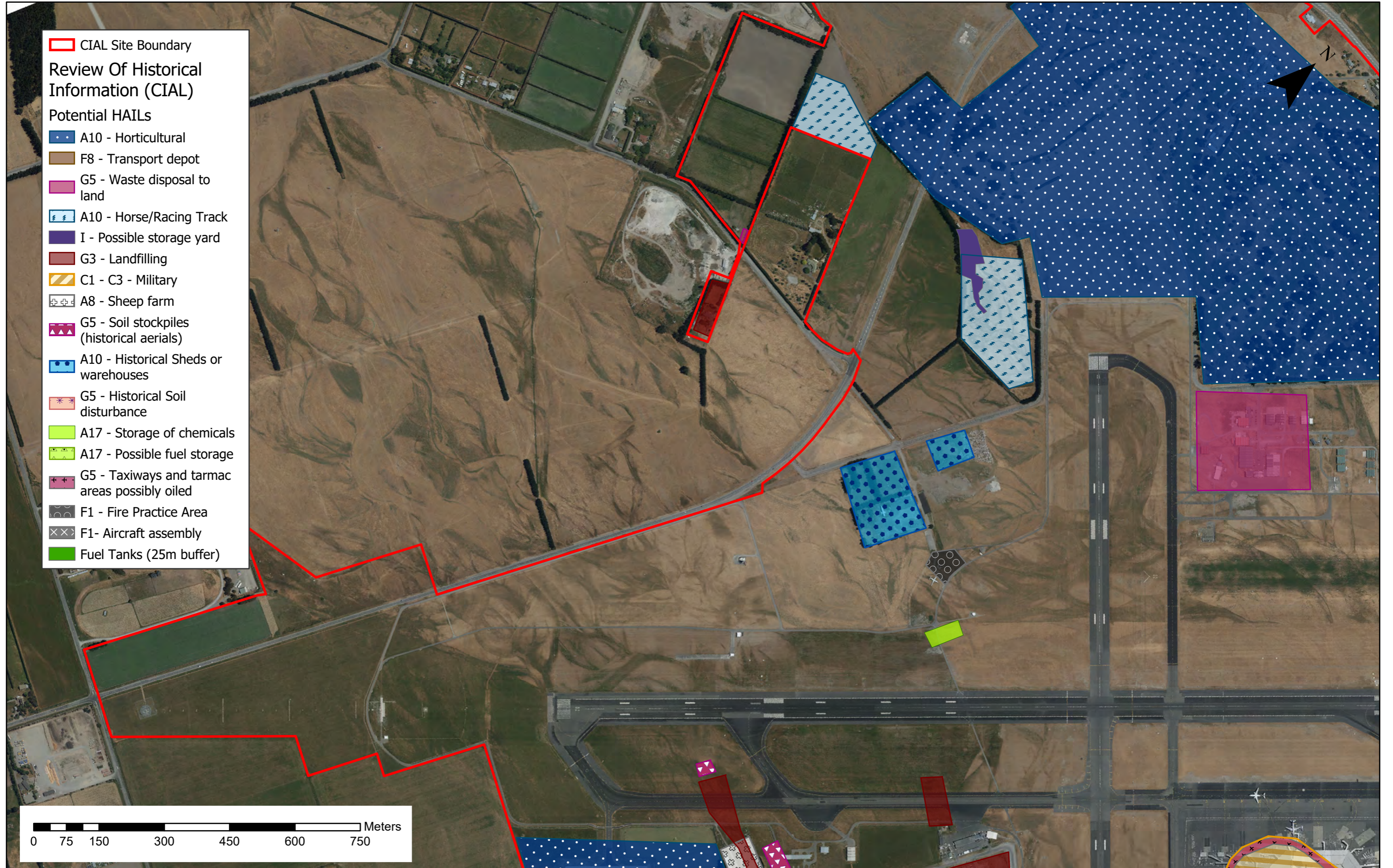


- CIAL Site Boundary
- Review Of Historical Information (CIAL)**
- Potential HAZARDOUS AREAS IN LANDS INFORMATION**
- A10 - Horticultural
- F8 - Transport depot
- G5 - Waste disposal to land
- A10 - Horse/Racing Track
- I - Possible storage yard
- G3 - Landfilling
- C1 - C3 - Military
- A8 - Sheep farm
- G5 - Soil stockpiles (historical aerials)
- A10 - Historical Sheds or warehouses
- G5 - Historical Soil disturbance
- A17 - Storage of chemicals
- A17 - Possible fuel storage
- G5 - Taxiways and tarmac areas possibly oiled
- F1 - Fire Practice Area
- F1- Aircraft assembly
- Fuel Tanks (25m buffer)

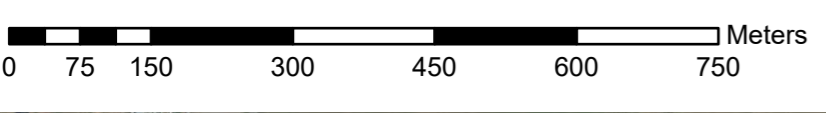
0 75 150 300 450 600 750 Meters

This figure and the information used in its preparation will reviewed and updated no later than 31 July 2021.
 Aerial Images: CIAL, 2018

PROJECT No. 53920.1000		CLIENT CHRISTCHURCH INTERNATIONAL AIRPORT LTD
DESIGNED ANDO Jul.19	DRAWN ANDO Jul.19	PROJECT CHRISTCHURCH AIRPORT PSI UPDATE
CHECKED JJXC Jul.19		TITLE REVIEW OF HISTORICAL INFORMATION - JULY 2019 (AERIAL PHOTOS AND CIAL RECORDS)
APPROVED	DATE	SCALE (A3) 1:15,000 FIG No. Figure 2 REV 0

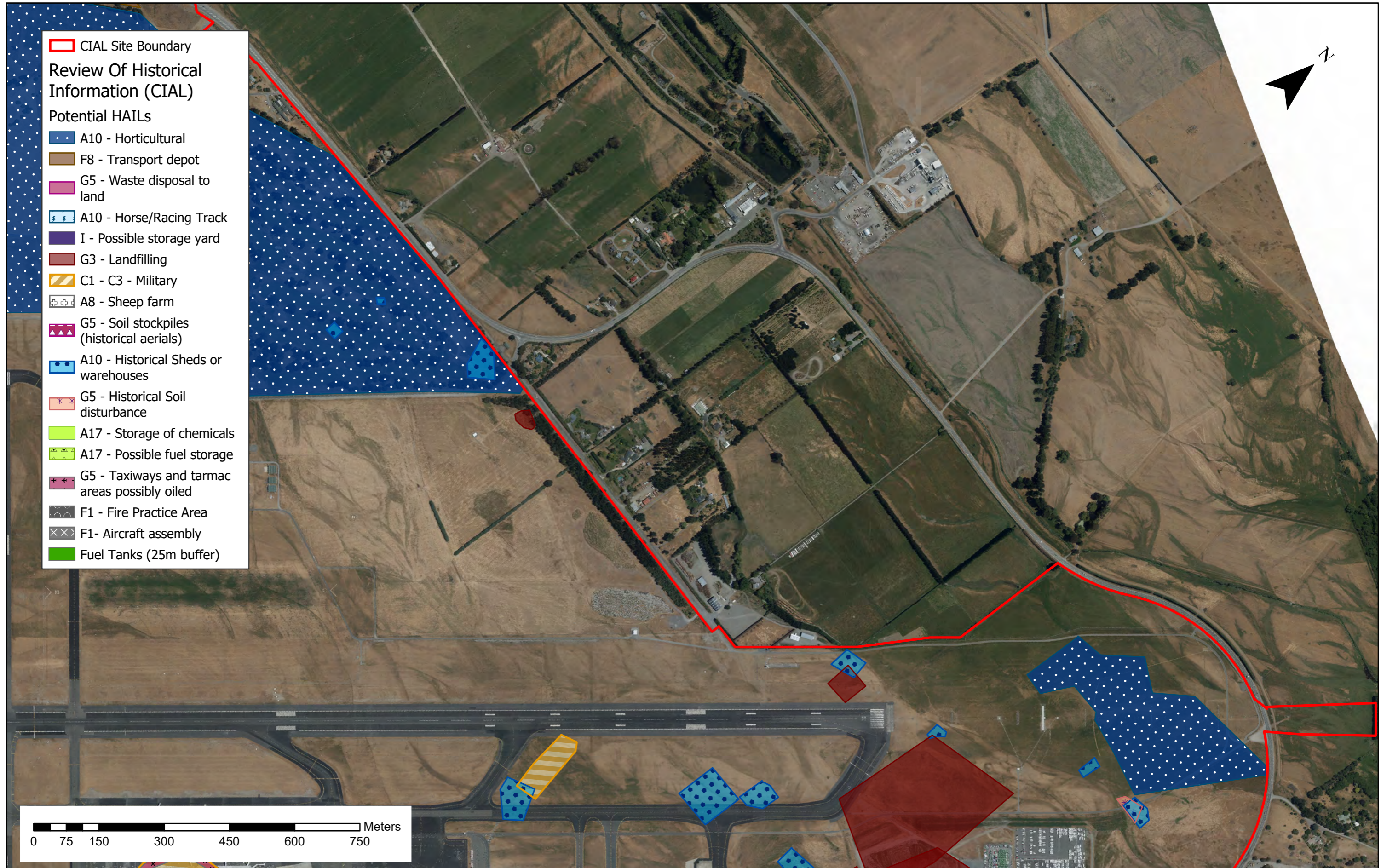


- Review Of Historical Information (CIAL)**
- Potential HAILS**
- CIAL Site Boundary
 - A10 - Horticultural
 - F8 - Transport depot
 - G5 - Waste disposal to land
 - A10 - Horse/Racing Track
 - I - Possible storage yard
 - G3 - Landfilling
 - C1 - C3 - Military
 - A8 - Sheep farm
 - G5 - Soil stockpiles (historical aerals)
 - A10 - Historical Sheds or warehouses
 - G5 - Historical Soil disturbance
 - A17 - Storage of chemicals
 - A17 - Possible fuel storage
 - G5 - Taxiways and tarmac areas possibly oiled
 - F1 - Fire Practice Area
 - F1- Aircraft assembly
 - Fuel Tanks (25m buffer)

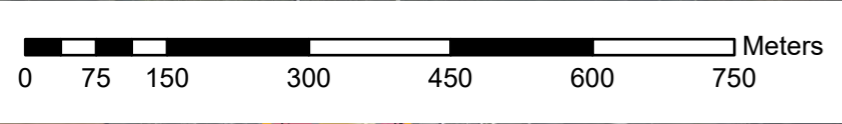


This figure and the information used in its preparation will reviewed and updated no later than 31 July 2021.
 Aerial Images: CIAL, 2018

PROJECT No. 53920.1000		CLIENT CHRISTCHURCH INTERNATIONAL AIRPORT LTD
DESIGNED ANDO Jul.19	DRAWN ANDO Jul.19	PROJECT CHRISTCHURCH AIRPORT PSI UPDATE
CHECKED JJXC Jul.19		TITLE REVIEW OF HISTORICAL INFORMATION - JULY 2019 (AERIAL PHOTOS AND CIAL RECORDS)
APPROVED	DATE	SCALE (A3) 1:8,000
		FIG No. Figure 2 a
		REV 0

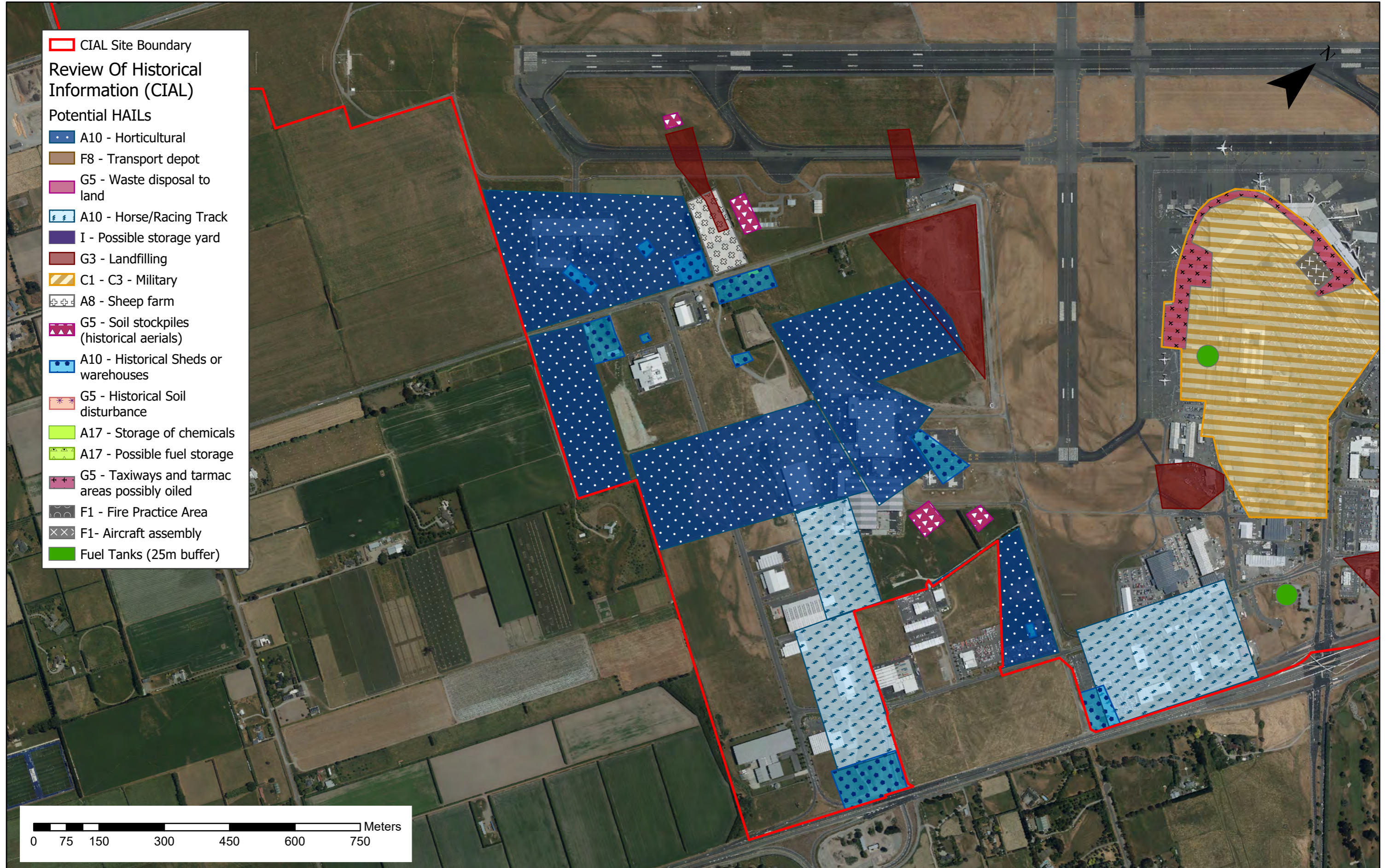


- Review Of Historical Information (CIAL)**
- Potential HAILS**
- CIAL Site Boundary
 - A10 - Horticultural
 - F8 - Transport depot
 - G5 - Waste disposal to land
 - A10 - Horse/Racing Track
 - I - Possible storage yard
 - G3 - Landfilling
 - C1 - C3 - Military
 - A8 - Sheep farm
 - G5 - Soil stockpiles (historical aerials)
 - A10 - Historical Sheds or warehouses
 - G5 - Historical Soil disturbance
 - A17 - Storage of chemicals
 - A17 - Possible fuel storage
 - G5 - Taxiways and tarmac areas possibly oiled
 - F1 - Fire Practice Area
 - F1- Aircraft assembly
 - Fuel Tanks (25m buffer)



This figure and the information used in its preparation will reviewed and updated no later than 31 July 2021.
Aerial Images: CIAL, 2018

PROJECT No. 53920.1000		CLIENT CHRISTCHURCH INTERNATIONAL AIRPORT LTD
DESIGNED ANDO Jul.19	DRAWN ANDO Jul.19	PROJECT CHRISTCHURCH AIRPORT PSI UPDATE
CHECKED JJXC Jul.19		TITLE REVIEW OF HISTORICAL INFORMATION - JULY 2019 (AERIAL PHOTOS AND CIAL RECORDS)
APPROVED	DATE	SCALE (A3) 1:8,000
		FIG No. Figure 2 b
		REV 0

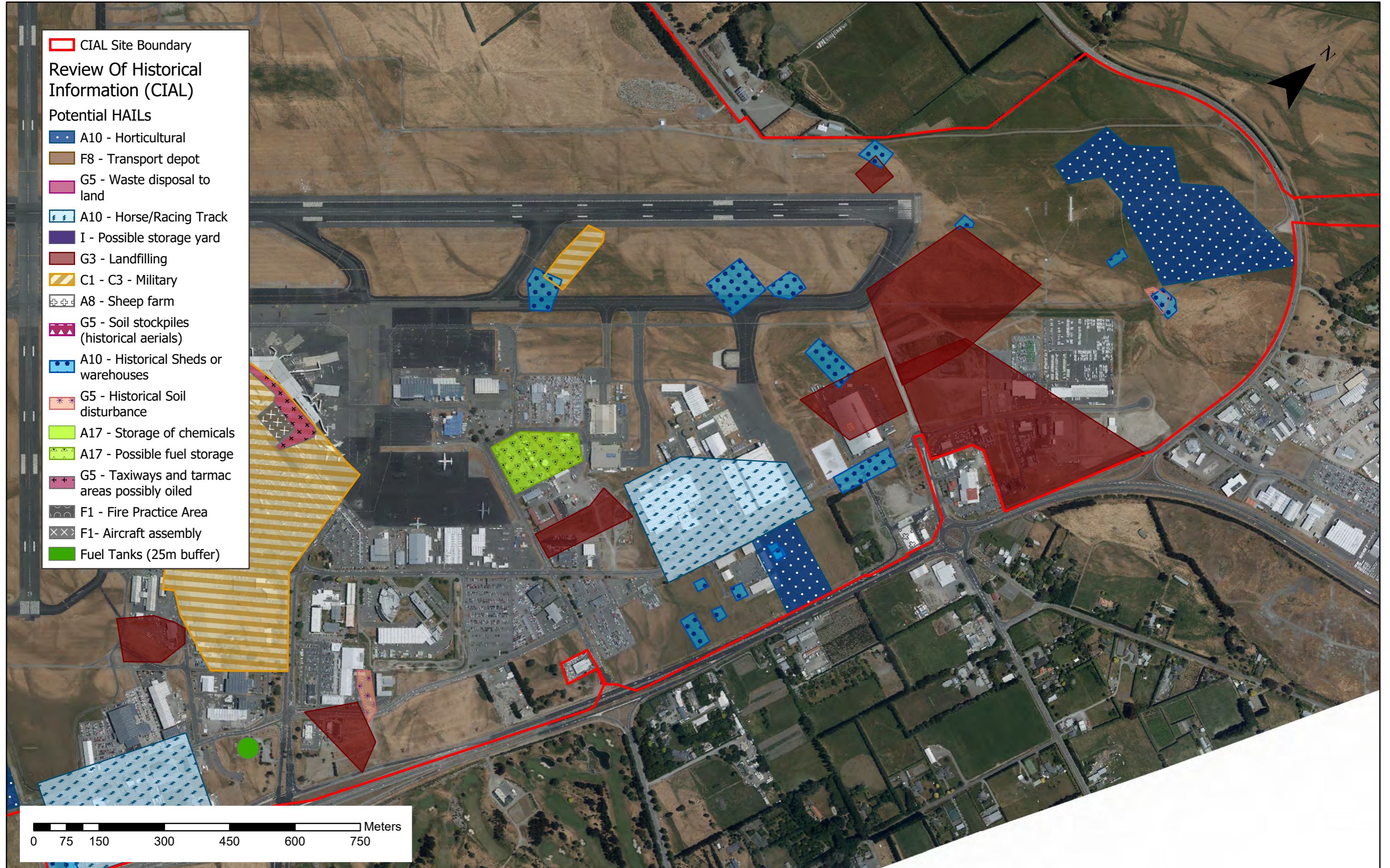


- CIAL Site Boundary
- Review Of Historical Information (CIAL)**
- Potential HAILS**
- A10 - Horticultural
- F8 - Transport depot
- G5 - Waste disposal to land
- A10 - Horse/Racing Track
- I - Possible storage yard
- G3 - Landfilling
- C1 - C3 - Military
- A8 - Sheep farm
- G5 - Soil stockpiles (historical aerials)
- A10 - Historical Sheds or warehouses
- G5 - Historical Soil disturbance
- A17 - Storage of chemicals
- A17 - Possible fuel storage
- G5 - Taxiways and tarmac areas possibly oiled
- F1 - Fire Practice Area
- F1- Aircraft assembly
- Fuel Tanks (25m buffer)

0 75 150 300 450 600 750 Meters

This figure and the information used in its preparation will reviewed and updated no later than 31 July 2021.
 Aerial Images: CIAL, 2018

PROJECT No. 53920.1000		CLIENT CHRISTCHURCH INTERNATIONAL AIRPORT LTD
DESIGNED ANDO Jul.19	DRAWN ANDO Jul.19	PROJECT CHRISTCHURCH AIRPORT PSI UPDATE
CHECKED JJXC Jul.19		TITLE REVIEW OF HISTORICAL INFORMATION - JULY 2019 (AERIAL PHOTOS AND CIAL RECORDS)
APPROVED	DATE	SCALE (A3) 1:8,000
		FIG No. Figure 2 c
		REV 0

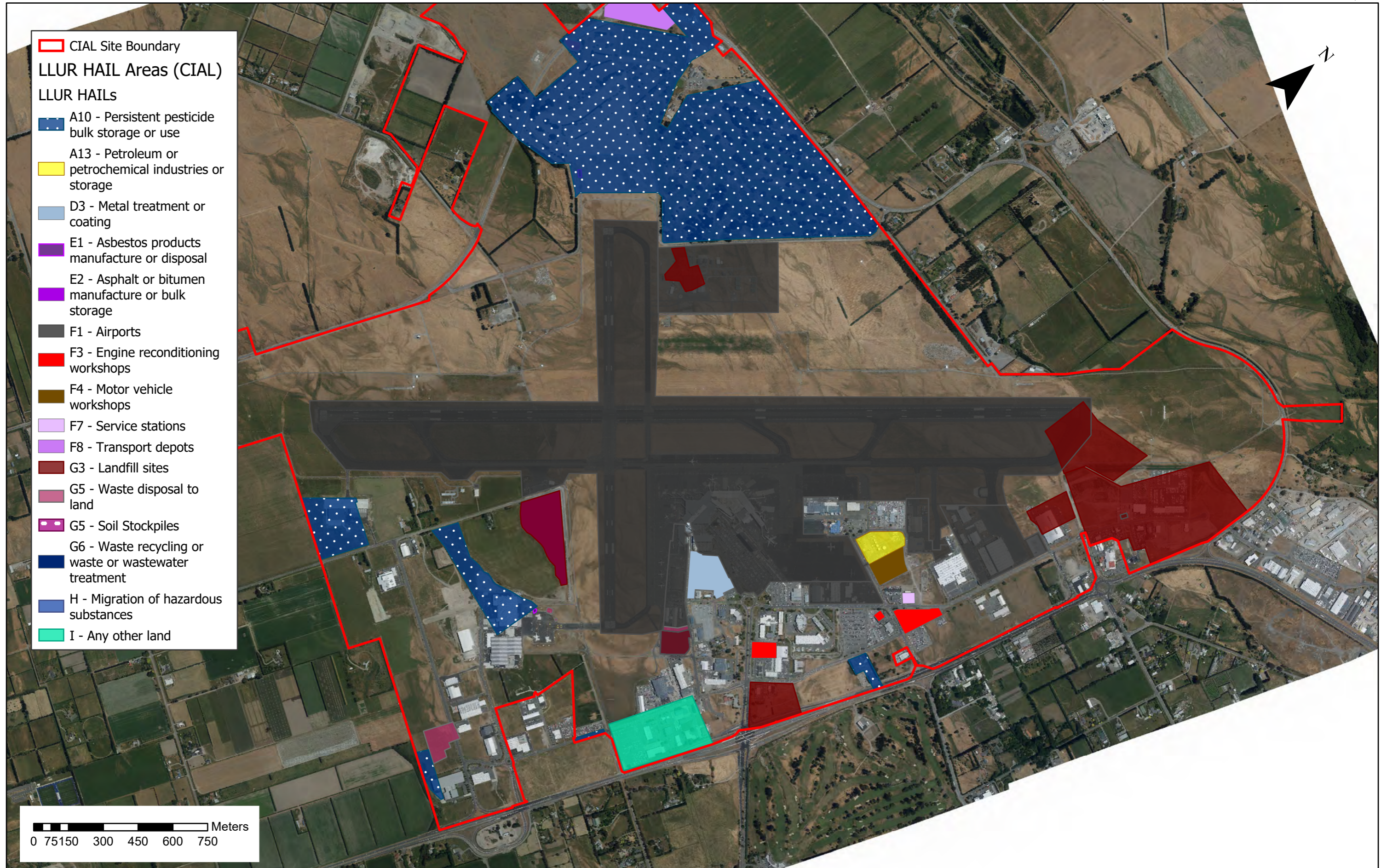


- Review Of Historical Information (CIAL)**
- Potential HAILS**
- CIAL Site Boundary
 - A10 - Horticultural
 - F8 - Transport depot
 - G5 - Waste disposal to land
 - A10 - Horse/Racing Track
 - I - Possible storage yard
 - G3 - Landfilling
 - C1 - C3 - Military
 - A8 - Sheep farm
 - G5 - Soil stockpiles (historical aerials)
 - A10 - Historical Sheds or warehouses
 - G5 - Historical Soil disturbance
 - A17 - Storage of chemicals
 - A17 - Possible fuel storage
 - G5 - Taxiways and tarmac areas possibly oiled
 - F1 - Fire Practice Area
 - F1- Aircraft assembly
 - Fuel Tanks (25m buffer)

0 75 150 300 450 600 750 Meters

This figure and the information used in its preparation will reviewed and updated no later than 31 July 2021.
 Aerial Images: CIAL, 2018

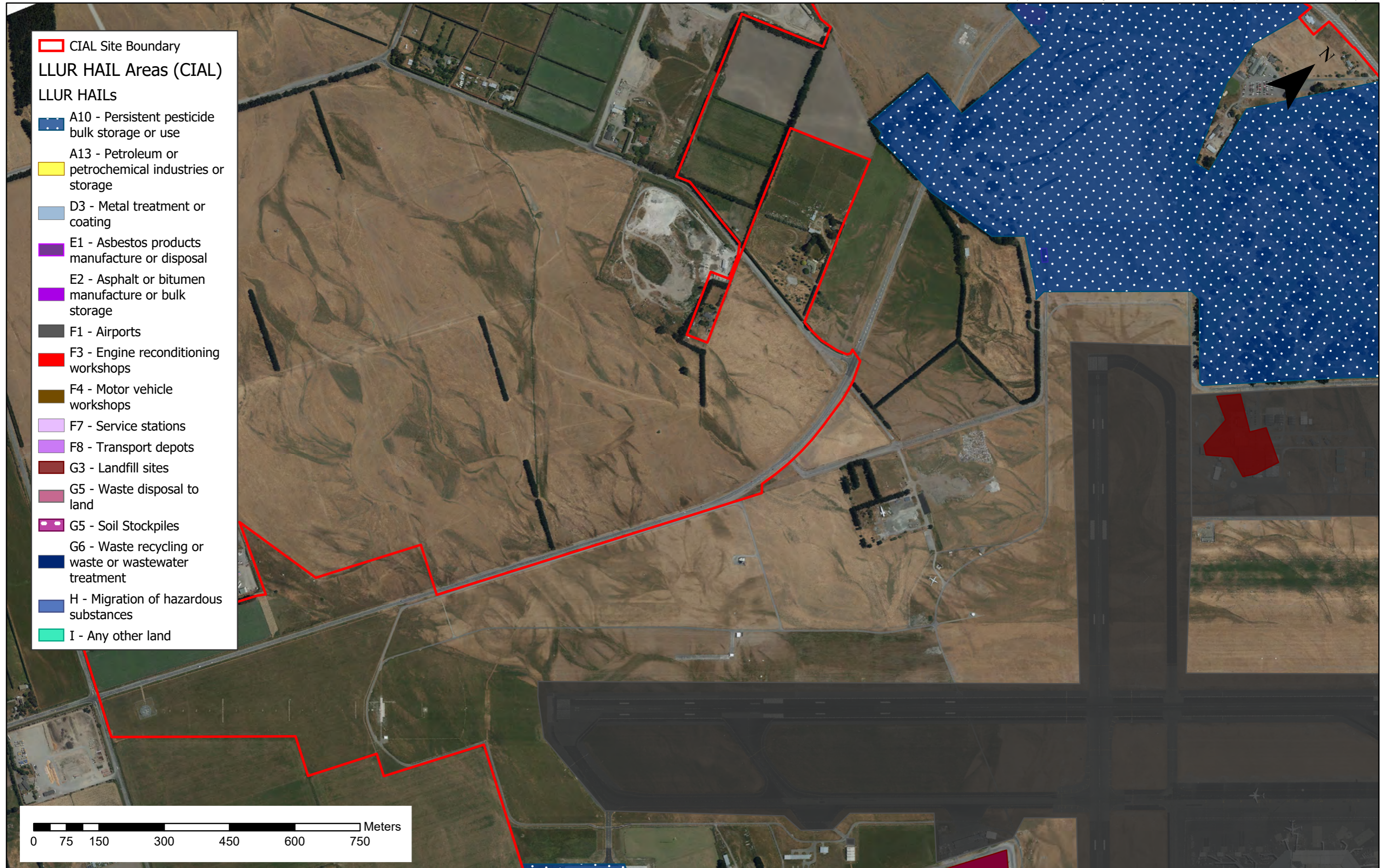
PROJECT No. 53920.1000		CLIENT CHRISTCHURCH INTERNATIONAL AIRPORT LTD
DESIGNED ANDO Jul.19	DRAWN ANDO Jul.19	PROJECT CHRISTCHURCH AIRPORT PSI UPDATE
CHECKED JJXC Jul.19		TITLE REVIEW OF HISTORICAL INFORMATION - JULY 2019 (AERIAL PHOTOS AND CIAL RECORDS)
APPROVED	DATE	SCALE (A3) 1:8,000
		FIG No. Figure 2 d
		REV 0



- CIAL Site Boundary
- LLUR HAIL Areas (CIAL)**
- LLUR HAILS**
- A10 - Persistent pesticide bulk storage or use
- A13 - Petroleum or petrochemical industries or storage
- D3 - Metal treatment or coating
- E1 - Asbestos products manufacture or disposal
- E2 - Asphalt or bitumen manufacture or bulk storage
- F1 - Airports
- F3 - Engine reconditioning workshops
- F4 - Motor vehicle workshops
- F7 - Service stations
- F8 - Transport depots
- G3 - Landfill sites
- G5 - Waste disposal to land
- G5 - Soil Stockpiles
- G6 - Waste recycling or waste or wastewater treatment
- H - Migration of hazardous substances
- I - Any other land

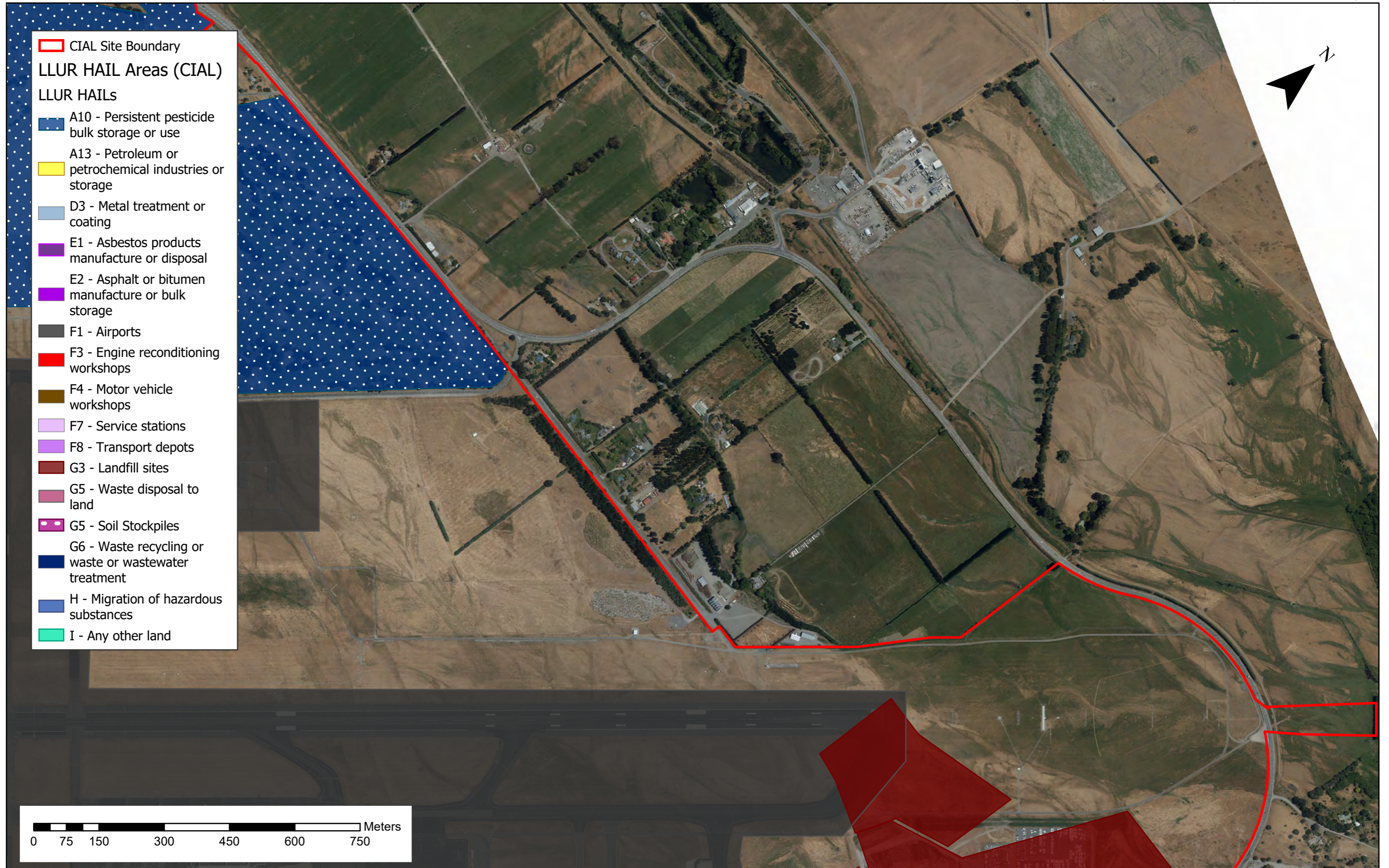
PROJECT No. 53920.1000			CLIENT CHRISTCHURCH INTERNATIONAL AIRPORT LTD		
DESIGNED	ANDO	Jul.19	PROJECT CHRISTCHURCH AIRPORT PSI UPDATE		
DRAWN	ANDO	Jul.19	TITLE ECAN HAIL AREAS AS PER THE LLUR - JULY 2019		
CHECKED	JJXC	Jul.19			
APPROVED			DATE	SCALE (A3) 1:15,000	

This figure and the information used in its preparation will reviewed and updated no later than 31 July 2021.
 Aerial Images: CIAL, 2018. LLUR data sourced from ECan 20th March 2019



PROJECT No. 53920.1000			CLIENT CHRISTCHURCH INTERNATIONAL AIRPORT LTD
DESIGNED	ANDO	Jul.19	PROJECT CHRISTCHURCH AIRPORT PSI UPDATE
DRAWN	ANDO	Jul.19	TITLE ECAN HAIL AREAS AS PER THE LLUR - JULY 2019
CHECKED	JJXC	Jul.19	SCALE (A3) 1:8,000
APPROVED			FIG No. Figure 1 a
DATE			REV 0

This figure and the information used in its preparation will reviewed and updated no later than 31 July 2021.
 Aerial Images: CIAL, 2018. LLUR data sourced from ECan 20th March 2019

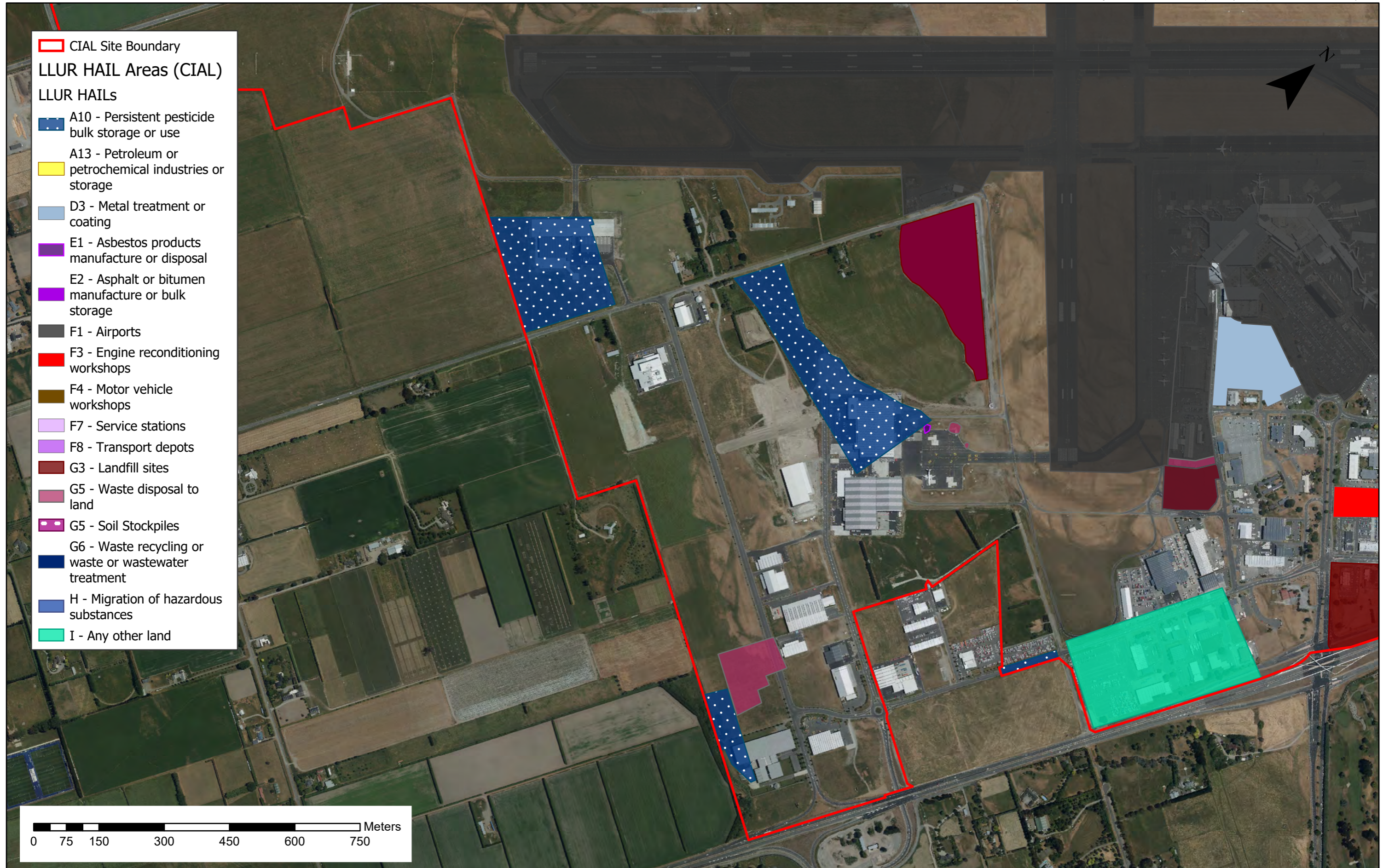


- CIAL Site Boundary
- LLUR HAIL Areas (CIAL)**
- LLUR HAILS**
- A10 - Persistent pesticide bulk storage or use
- A13 - Petroleum or petrochemical industries or storage
- D3 - Metal treatment or coating
- E1 - Asbestos products manufacture or disposal
- E2 - Asphalt or bitumen manufacture or bulk storage
- F1 - Airports
- F3 - Engine reconditioning workshops
- F4 - Motor vehicle workshops
- F7 - Service stations
- F8 - Transport depots
- G3 - Landfill sites
- G5 - Waste disposal to land
- G5 - Soil Stockpiles
- G6 - Waste recycling or waste or wastewater treatment
- H - Migration of hazardous substances
- I - Any other land

0 75 150 300 450 600 750 Meters

This figure and the information used in its preparation will reviewed and updated no later than 31 July 2021.
 Aerial Images: CIAL, 2018. LLUR data sourced from ECan 20th March 2019

PROJECT No. 53920.1000			CLIENT	CHRISTCHURCH INTERNATIONAL AIRPORT LTD
DESIGNED	ANDO	Jul.19	PROJECT	CHRISTCHURCH AIRPORT PSI UPDATE
DRAWN	ANDO	Jul.19	TITLE	ECAN HAIL AREAS AS PER THE LLUR - JULY 2019
CHECKED	JJXC	Jul.19	SCALE (A3)	1:8,000
APPROVED	DATE		FIG No.	Figure 1 b
			REV	0

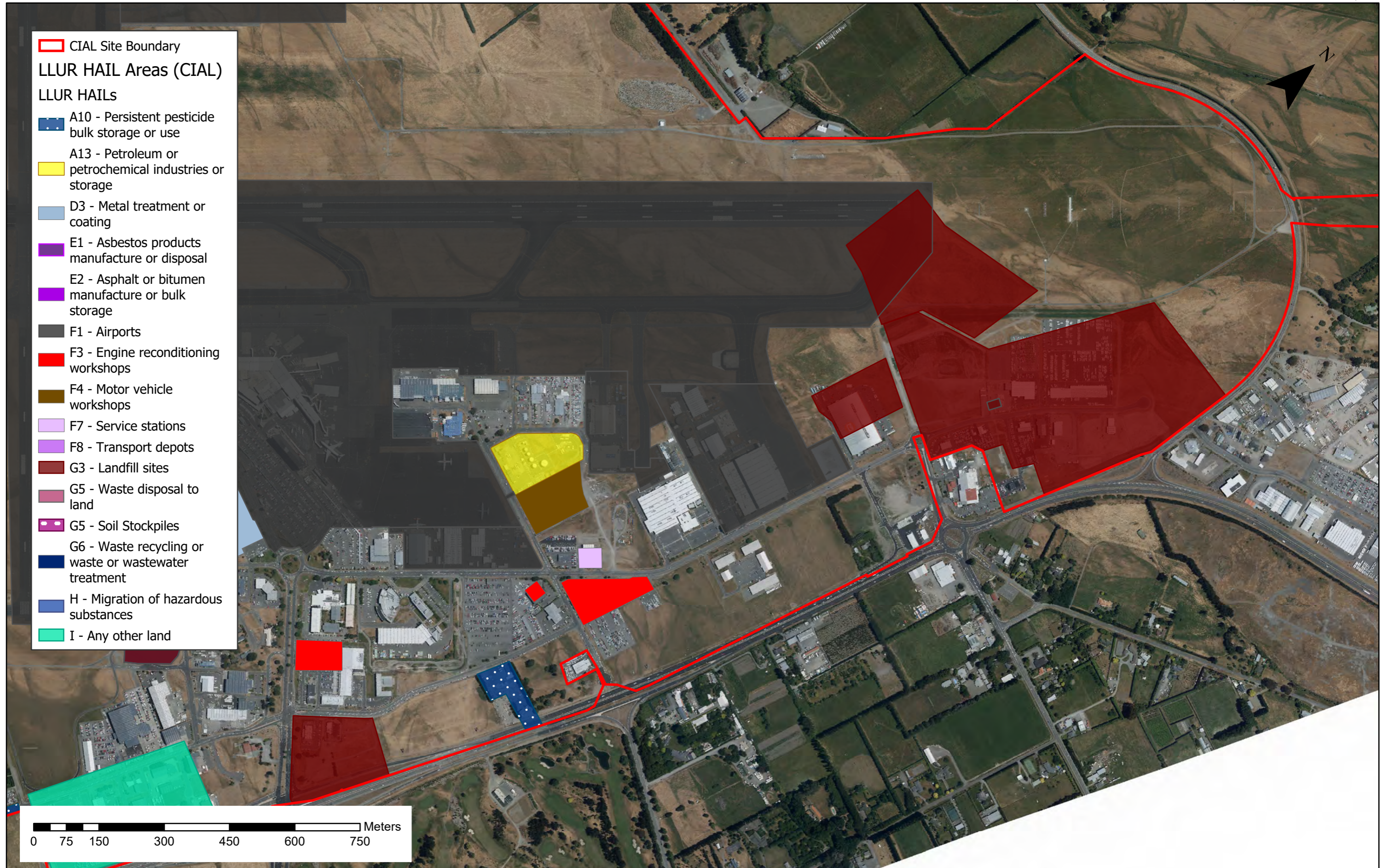


- CIAL Site Boundary
- LLUR HAIL Areas (CIAL)**
- LLUR HAILS**
- A10 - Persistent pesticide bulk storage or use
- A13 - Petroleum or petrochemical industries or storage
- D3 - Metal treatment or coating
- E1 - Asbestos products manufacture or disposal
- E2 - Asphalt or bitumen manufacture or bulk storage
- F1 - Airports
- F3 - Engine reconditioning workshops
- F4 - Motor vehicle workshops
- F7 - Service stations
- F8 - Transport depots
- G3 - Landfill sites
- G5 - Waste disposal to land
- G5 - Soil Stockpiles
- G6 - Waste recycling or waste or wastewater treatment
- H - Migration of hazardous substances
- I - Any other land

0 75 150 300 450 600 750 Meters

This figure and the information used in its preparation will reviewed and updated no later than 31 July 2021.
 Aerial Images: CIAL, 2018. LLUR data sourced from ECan 20th March 2019

PROJECT No. 53920.1000		CLIENT CHRISTCHURCH INTERNATIONAL AIRPORT LTD
DESIGNED	ANDO Jul.19	PROJECT CHRISTCHURCH AIRPORT PSI UPDATE
DRAWN	ANDO Jul.19	TITLE ECAN HAIL AREAS AS PER THE LLUR - JULY 2019
CHECKED	JJXC Jul.19	SCALE (A3) 1:8,000
APPROVED	DATE	FIG No. Figure 1 c
		REV 0



This figure and the information used in its preparation will reviewed and updated no later than 31 July 2021.
 Aerial Images: CIAL, 2018. LLUR data sourced from ECan 20th March 2019

PROJECT No. 53920.1000			CLIENT	CHRISTCHURCH INTERNATIONAL AIRPORT LTD
DESIGNED	ANDO	Jul.19	PROJECT	CHRISTCHURCH AIRPORT PSI UPDATE
DRAWN	ANDO	Jul.19	TITLE	ECAN HAIL AREAS AS PER THE LLUR - JULY 2019
CHECKED	JJXC	Jul.19	SCALE (A3)	1:8,000
APPROVED	DATE		FIG No.	Figure 1 d
			REV	0



CIAL Site Boundary
 Previous Investigation Areas (CIAL)

Meters
 0 75 150 300 450 600 750

PROJECT No. 53920.1000		CLIENT CHRISTCHURCH INTERNATIONAL AIRPORT LTD
DESIGNED ANDO Jul.19	DRAWN ANDO Jul.19	PROJECT CHRISTCHURCH AIRPORT PSI UPDATE
CHECKED JJXC Jul.19		TITLE PREVIOUS SITE INVESTIGATION AREAS - JULY 2019
APPROVED	DATE	SCALE (A3) 1:15,000
		FIG No. Figure 3
		REV 0



CIAL Site Boundary
 Previous Investigation Areas (CIAL)

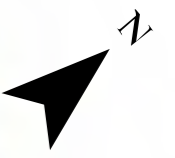
0 75 150 300 450 600 750 Meters

This figure and the information used in its preparation will reviewed and updated no later than 31 July 2021.
 Aerial Images: CIAL, 2018

PROJECT No. 53920.1000			CLIENT	CHRISTCHURCH INTERNATIONAL AIRPORT LTD
DESIGNED	ANDO	Jul.19	PROJECT	CHRISTCHURCH AIRPORT PSI UPDATE
DRAWN	ANDO	Jul.19	TITLE	PREVIOUS SITE INVESTIGATION AREAS - JULY 2019
CHECKED	JJXC	Jul.19	SCALE (A3)	1:8,000
APPROVED	DATE		FIG No.	Figure 3 a
			REV	0



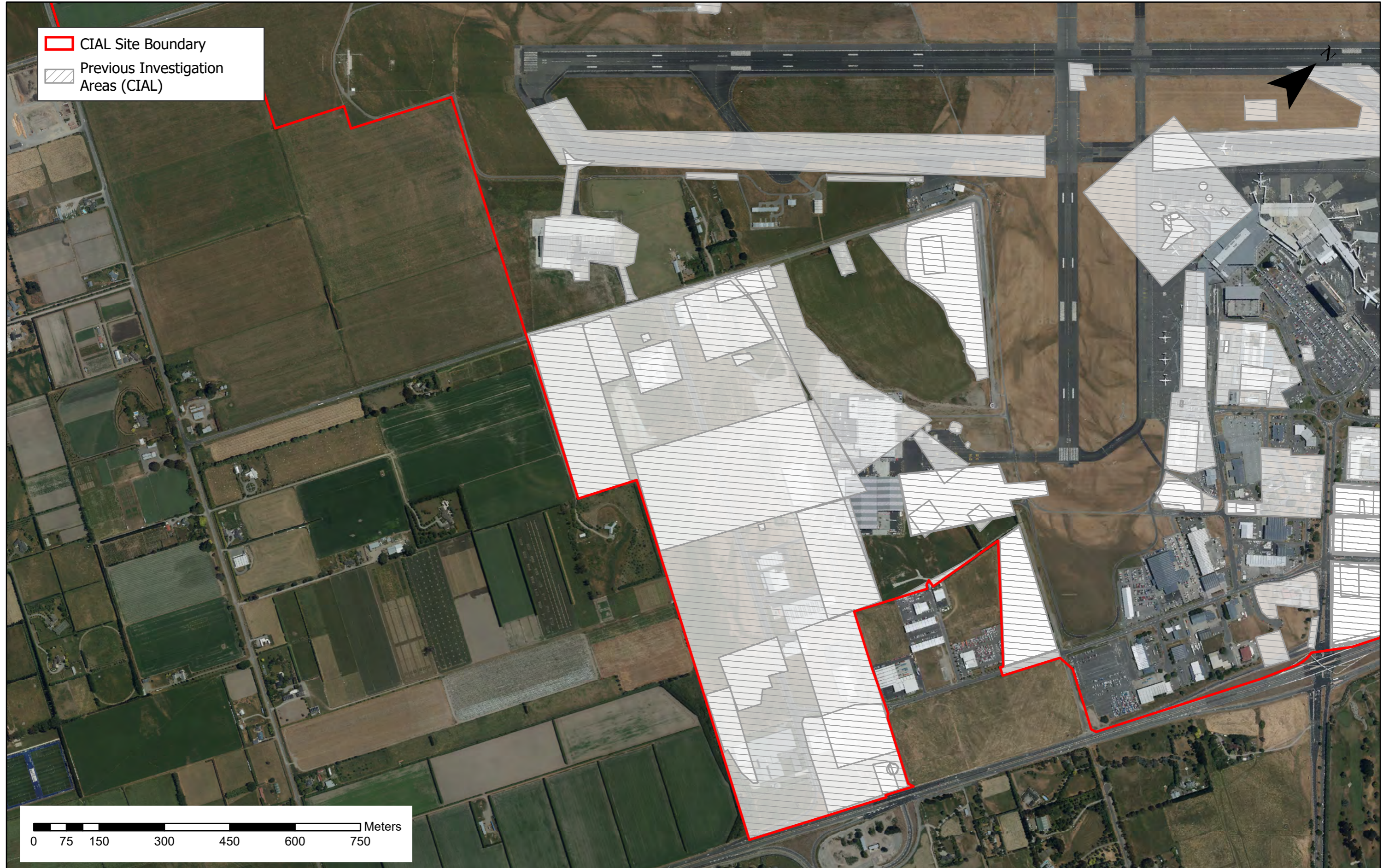
CIAL Site Boundary
 Previous Investigation Areas (CIAL)



0 75 150 300 450 600 750 Meters

This figure and the information used in its preparation will reviewed and updated no later than 31 July 2021.
 Aerial Images: CIAL, 2018

PROJECT No. 53920.1000			CLIENT CHRISTCHURCH INTERNATIONAL AIRPORT LTD		
DESIGNED	ANDO	Jul.19	PROJECT CHRISTCHURCH AIRPORT PSI UPDATE		
DRAWN	ANDO	Jul.19			
CHECKED	JJXC	Jul.19			
TITLE PREVIOUS SITE INVESTIGATION AREAS - JULY 2019			SCALE (A3) 1:8,000		
APPROVED			DATE		FIG No. Figure 3 b
					REV 0



PROJECT No. 53920.1000		CLIENT CHRISTCHURCH INTERNATIONAL AIRPORT LTD
DESIGNED ANDO Jul.19	DRAWN ANDO Jul.19	PROJECT CHRISTCHURCH AIRPORT PSI UPDATE
CHECKED JJXC Jul.19		TITLE PREVIOUS SITE INVESTIGATION AREAS - JULY 2019
APPROVED	DATE	SCALE (A3) 1:8,000
		FIG No. Figure 3 c
		REV 0



This figure and the information used in its preparation will reviewed and updated no later than 31 July 2021.
 Aerial Images: CIAL, 2018

PROJECT No.	53920.1000	
DESIGNED	ANDO	Jul.19
DRAWN	ANDO	Jul.19
CHECKED	JJXC	Jul.19
APPROVED	DATE	

CLIENT	CHRISTCHURCH INTERNATIONAL AIRPORT LTD	
PROJECT	CHRISTCHURCH AIRPORT PSI UPDATE	
TITLE	PREVIOUS SITE INVESTIGATION AREAS - JULY 2019	
SCALE (A3)	1:8,000	FIG No. Figure 3 d
REV	0	